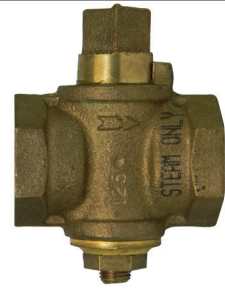


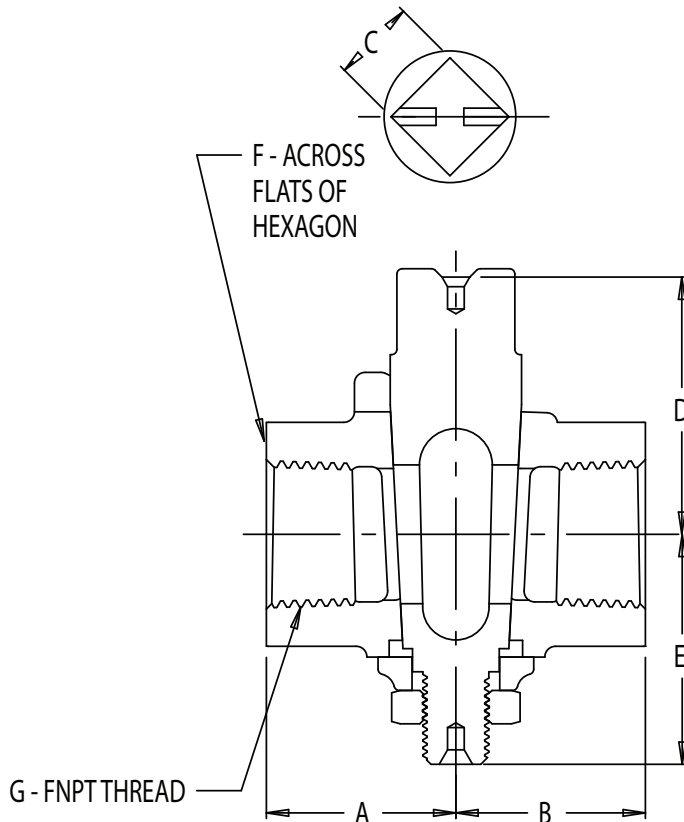
# SUBMITTAL DATA SHEET

## Domestic Steam Stops - Steam Only Square Head Plug Valve Less Check - 9702

FNPT x FNPT



A.Y. McDonald Mfg. Co. Steam Stops are constructed from heavy duty cast bronze. They utilize a tapered plug design with lubricant for an effective seal at high temperatures. These valves are recommended to be used in steam piping applications. **Not intended for liquid matter or natural gas use.** Made in the USA.



### Dimensions

Size	A	B	C	D	E	F	G
3/8"	.93	.93	.42	1.33	1.30	.94	3/8
1/2"	1.07	1.07	.47	1.50	1.29	1.09	1/2
3/4"	1.19	1.19	.58	1.74	1.45	1.34	3/4
1"	1.48	1.48	.69	2.15	1.94	1.63	1
1 1/4"	1.61	1.61	.78	2.43	2.19	1.94	1 1/4
1 1/2"	2.00	2.00	1.00	2.68	2.34	2.31	1 1/2
2"	2.53	2.53	1.16	3.21	2.92	2.78	2

### SUBMITTAL INFORMATION

- Sizes: 3/8" - 2"
- 125 PSI Steam at 250°
- Cast Bronze Construction
- Threads conform to ANSI B1.20.1
- Steam Only



Non-Potable  
Use Only

**WARNING:** It is unlawful in **CALIFORNIA & VERMONT** (effective 1/1/2010); **MARYLAND** (effective 1/1/2012); **LOUISIANA** (effective 1/1/2013) and the **UNITED STATES OF AMERICA** (effective 1/4/2014) to use **THIS PRODUCT** in the installation or repair of any public water system or any plumbing in a facility or system that provides water for human consumption. The wetted surface area of **THIS PRODUCT** has a weighted average lead content greater than 0.25%.



A.Y. McDonald Mfg. Co.  
P.O. Box 508  
Dubuque, IA 52004-0508

Toll Free: 1-800-292-2737  
Fax: 1-800-832-9296  
Hours: 7:00 a.m. - 5:00 p.m., CST

sales@aymcdonald.com  
www.aymcdonald.com

A.Y. McDonald considers the information on this assembly drawing correct when published. Item and option availability, including specifications, are subject to change without notice.

Submitted by: